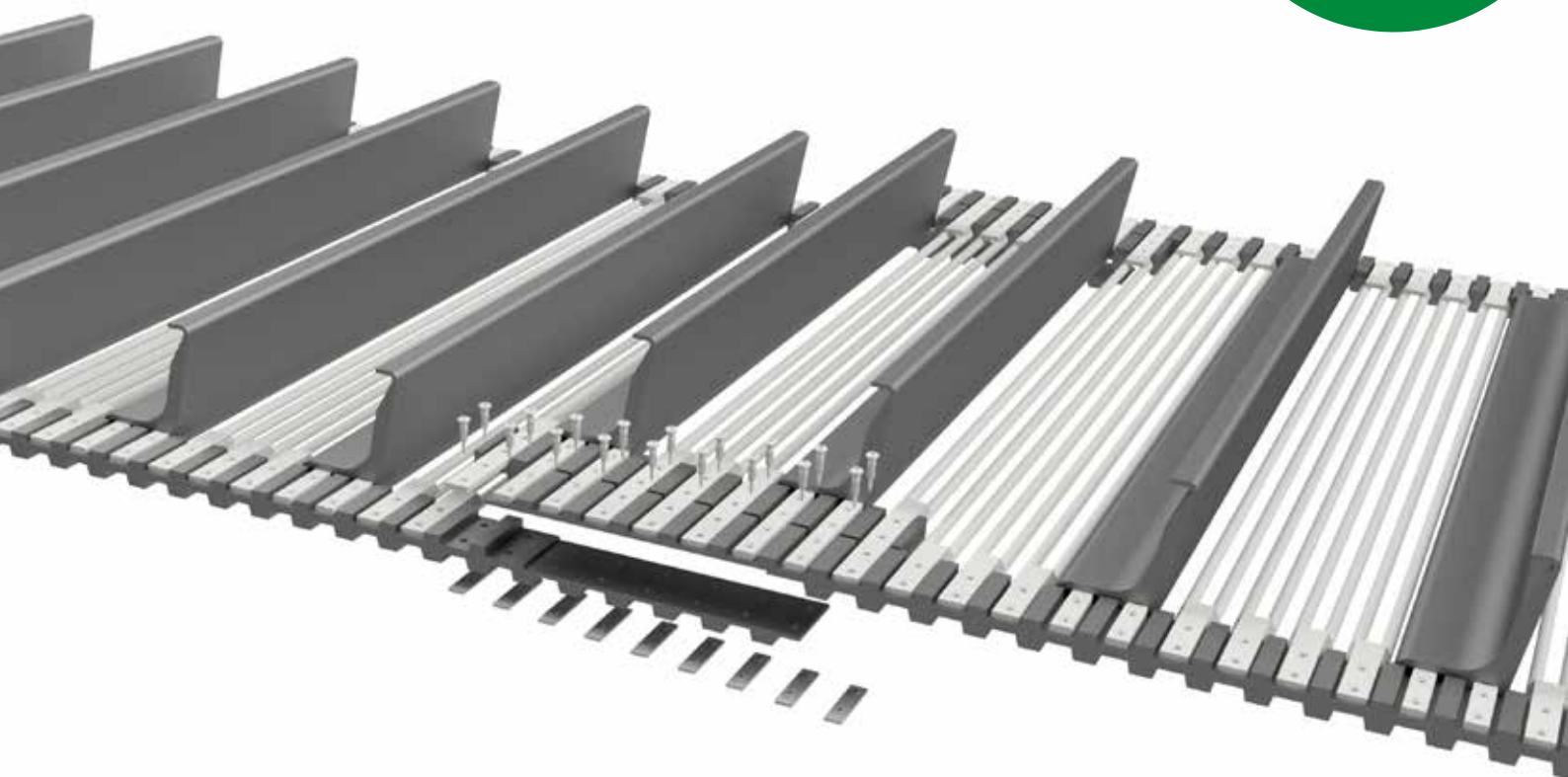


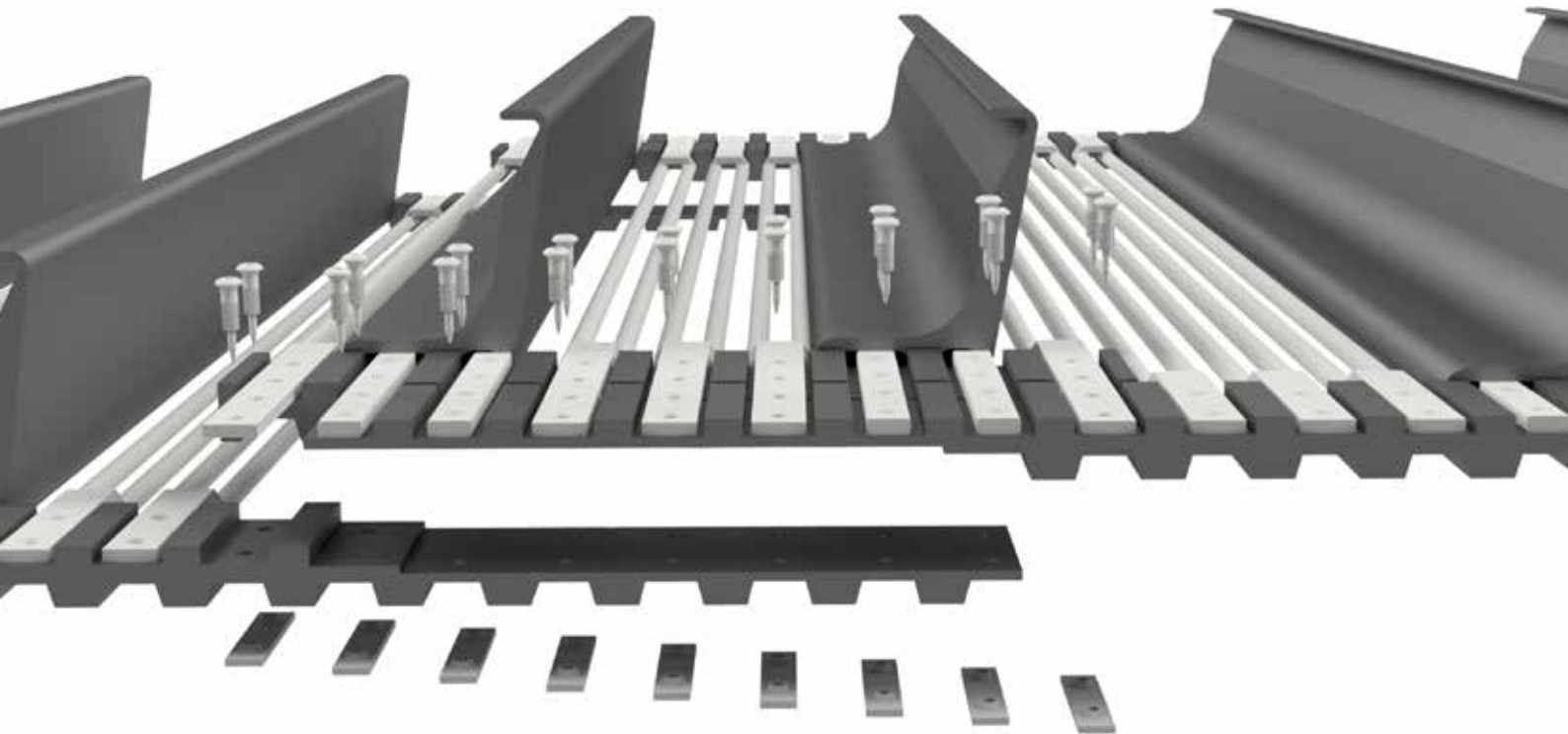
# Helperbelt

Go beyond breaking point!

Innovative  
solution  
for joints



In every conveyor belt, the joint is the weakest point, but it is not always possible to fit a belt endlessly. In many applications, belts have to be replaced because the joint fails. Broekema's patented helperbelt restores the full breaking strength of the belts at the point of the joint.



The helperbelt is an innovative and patented solution from Broekema, which enables the user to mount a sieve belt non-endslessly, without compromising the breaking strength of the belts.

A helperbelt positions an extra set of non-ends belts at the joint, overlap, or lock construction and thereby restores the full breaking strength of the belts. This makes it a complete answer to all applications where the joint is critical or often fails. It uses patented pilot bolts that are fully sunk in the rods.

## Experiences

Helperbelts have been used and appreciated by customers for many years, to their complete satisfaction. For example, bunker discharge conveyors or washing installations where belts often break at the joints due to frequent slippage.

## Application

The helperbelt is supplied as a set of unbroken belts and rods, which can be mounted together with the main sievebelt. A helperbelt construction eliminates the need for a full overlap or lock and restores the full breaking strength of the belt at the point of joint. This has a very long lifespan and ensures that there is no tearing of joints, locks or clips.

**For more information and pricing, contact us or check our website.**